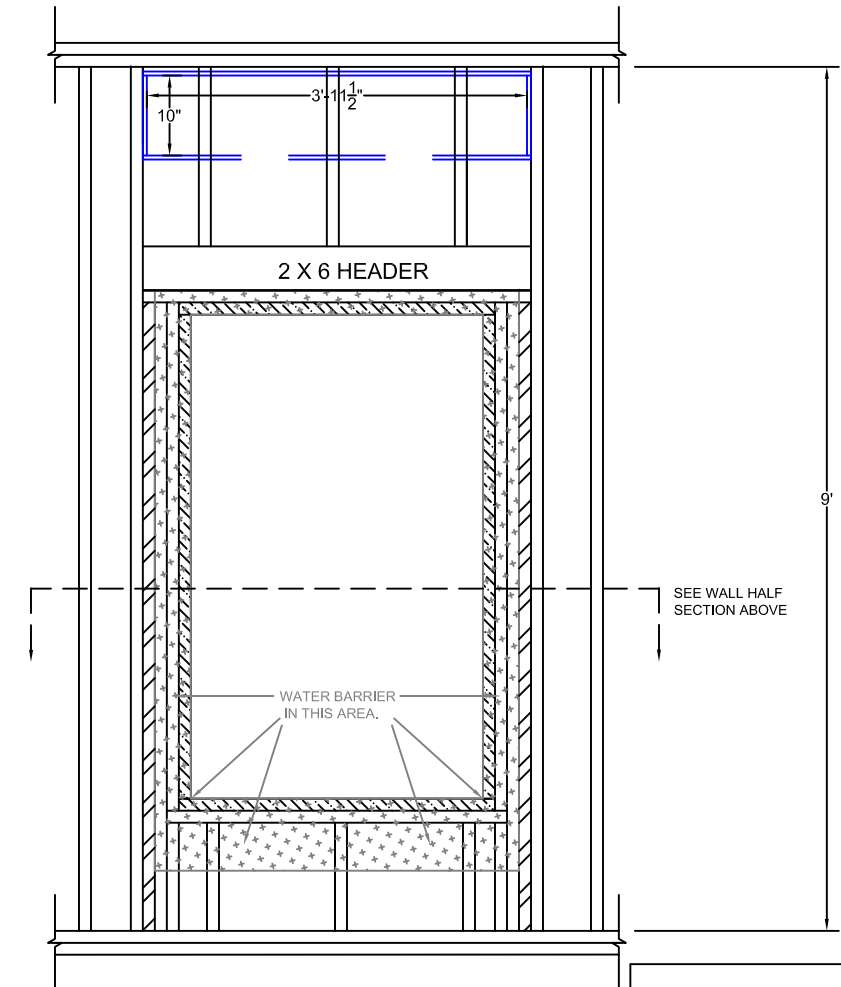
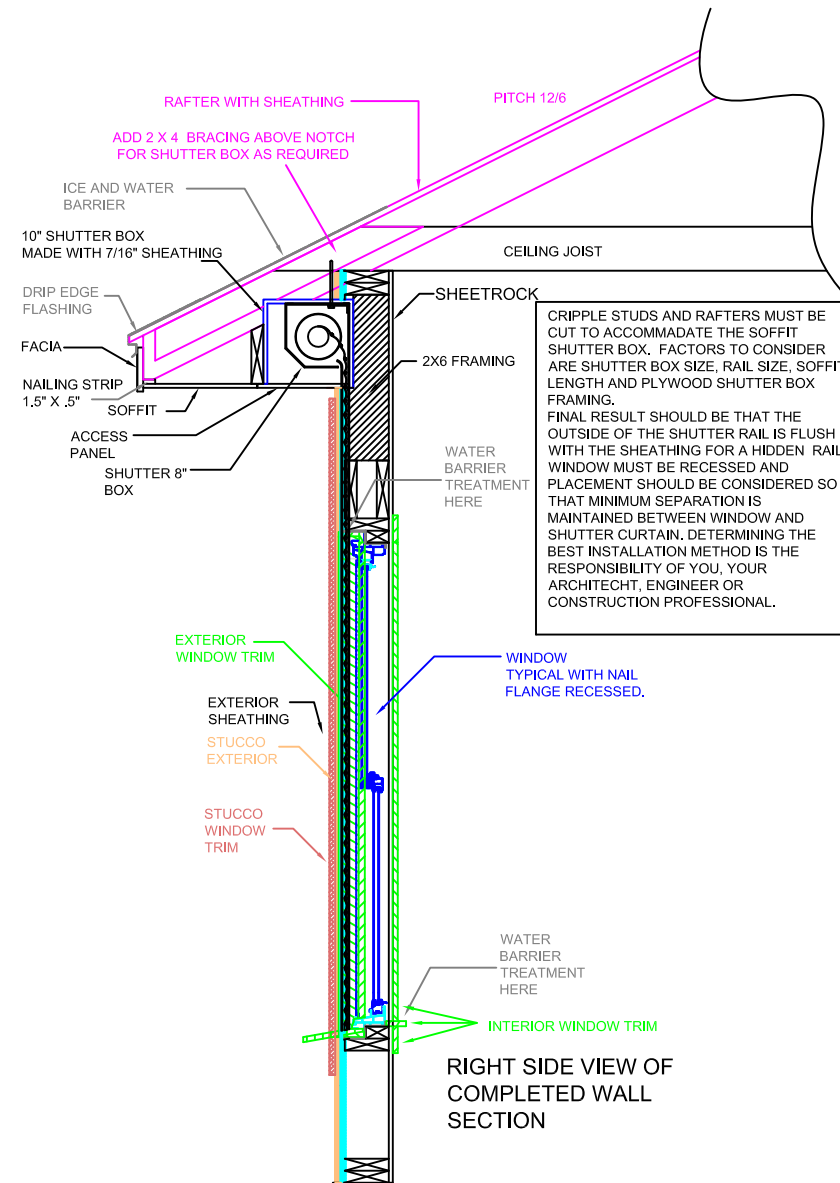
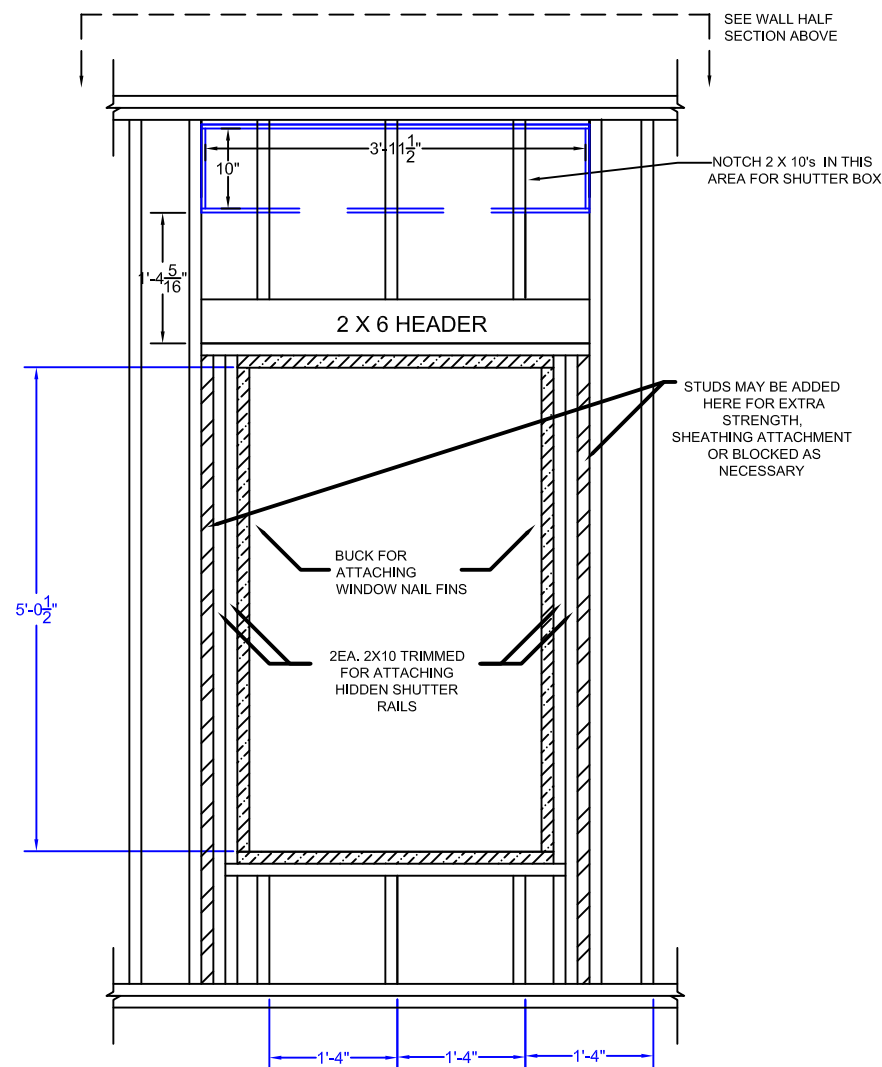
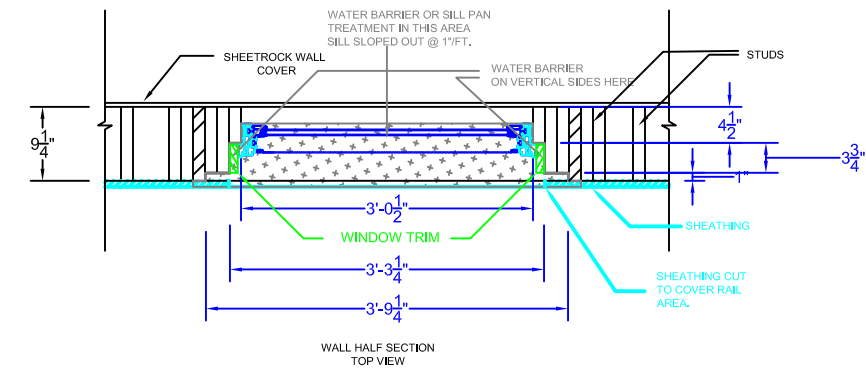


SOFFIT MOUNTED SHUTTER FRAMING AND WATER BARRIER DETAILS

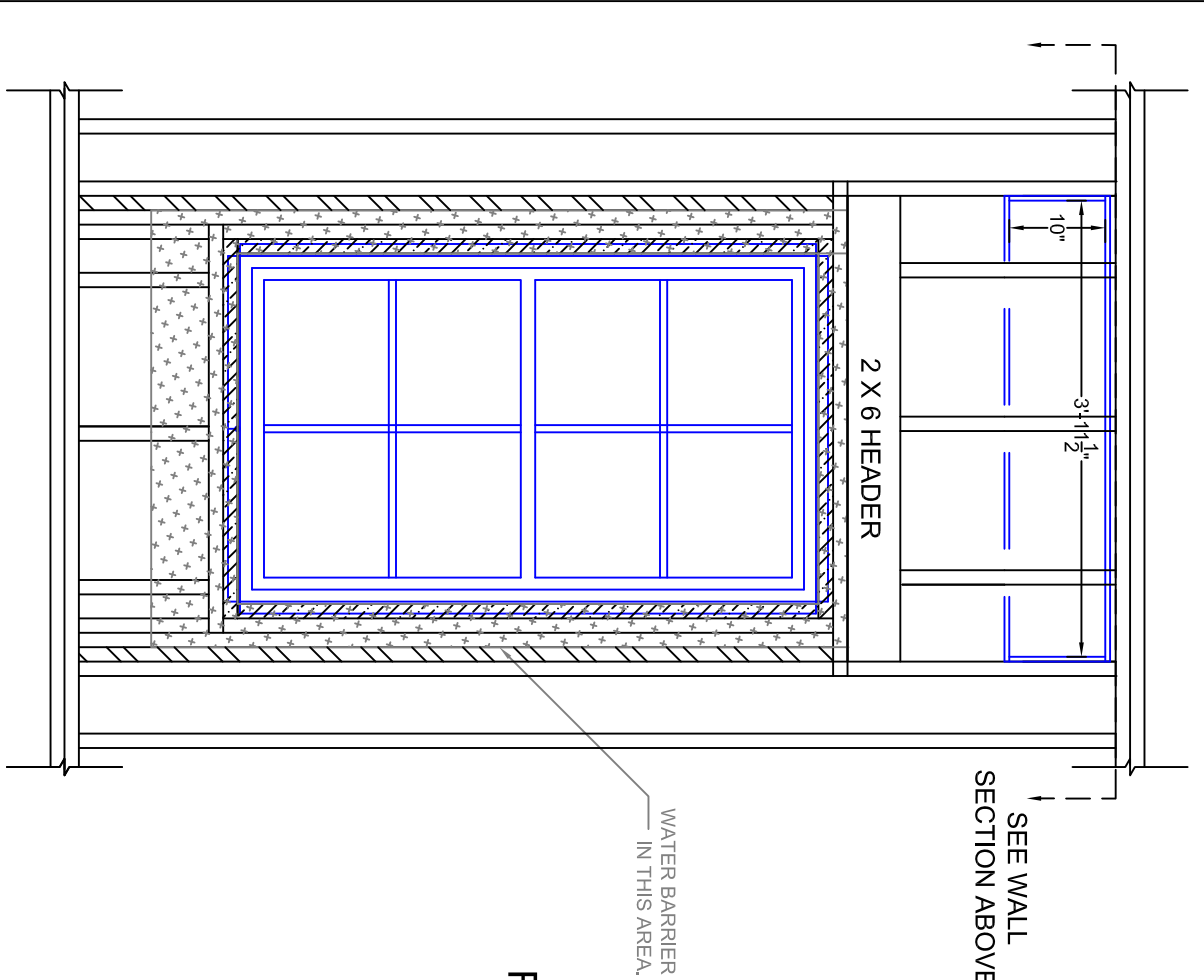
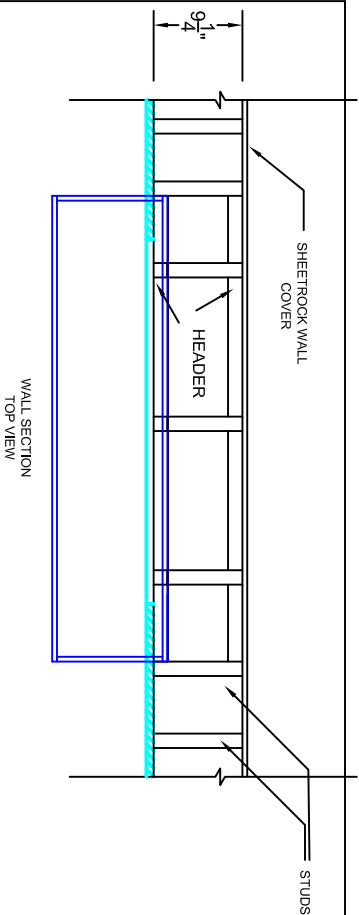


WATER BARRIER MUST BE
INSTALLED PER MANUFACTURES
INSTRUCTIONS FOR FLASHING OF
RECESSED WINDOWS.

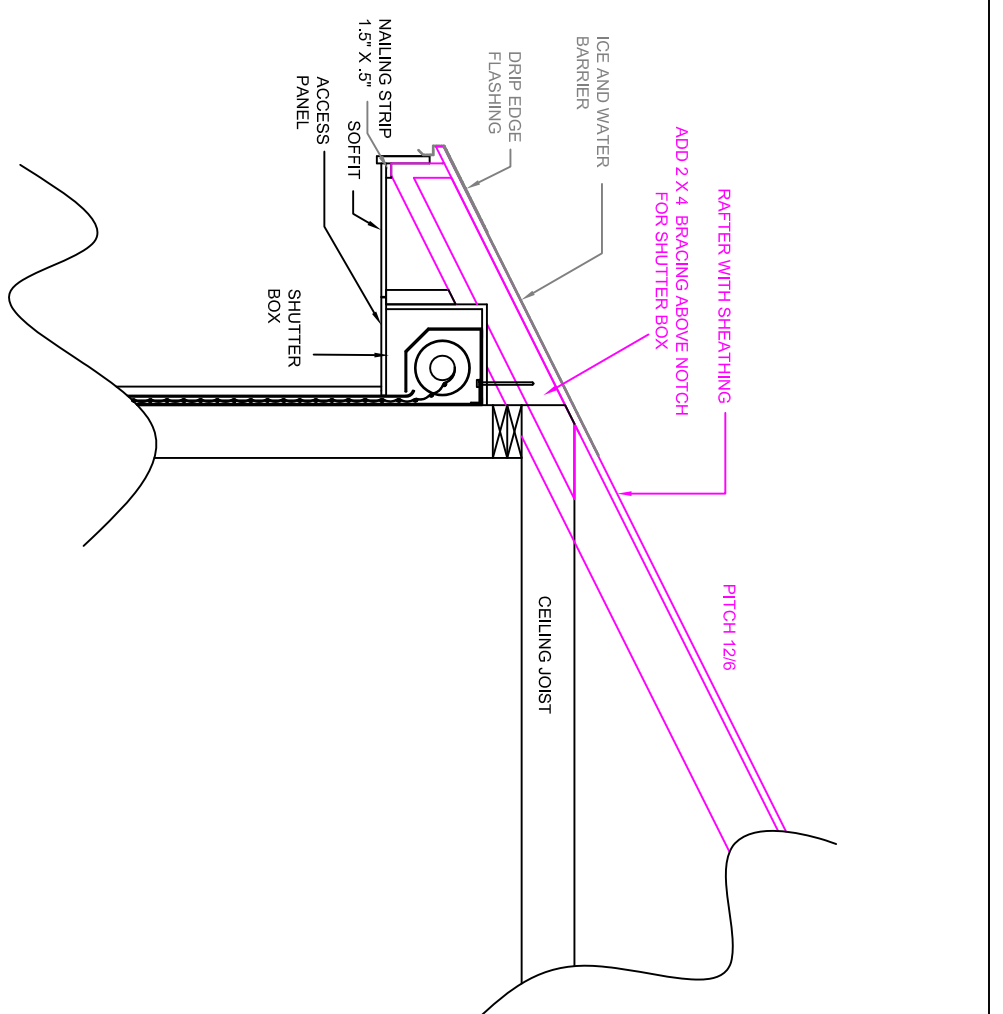
TYPICAL DETAIL FOR 30-50 WINDOW IN 2X6
FRAMING WITH SOFFIT SHUTTER BOX.



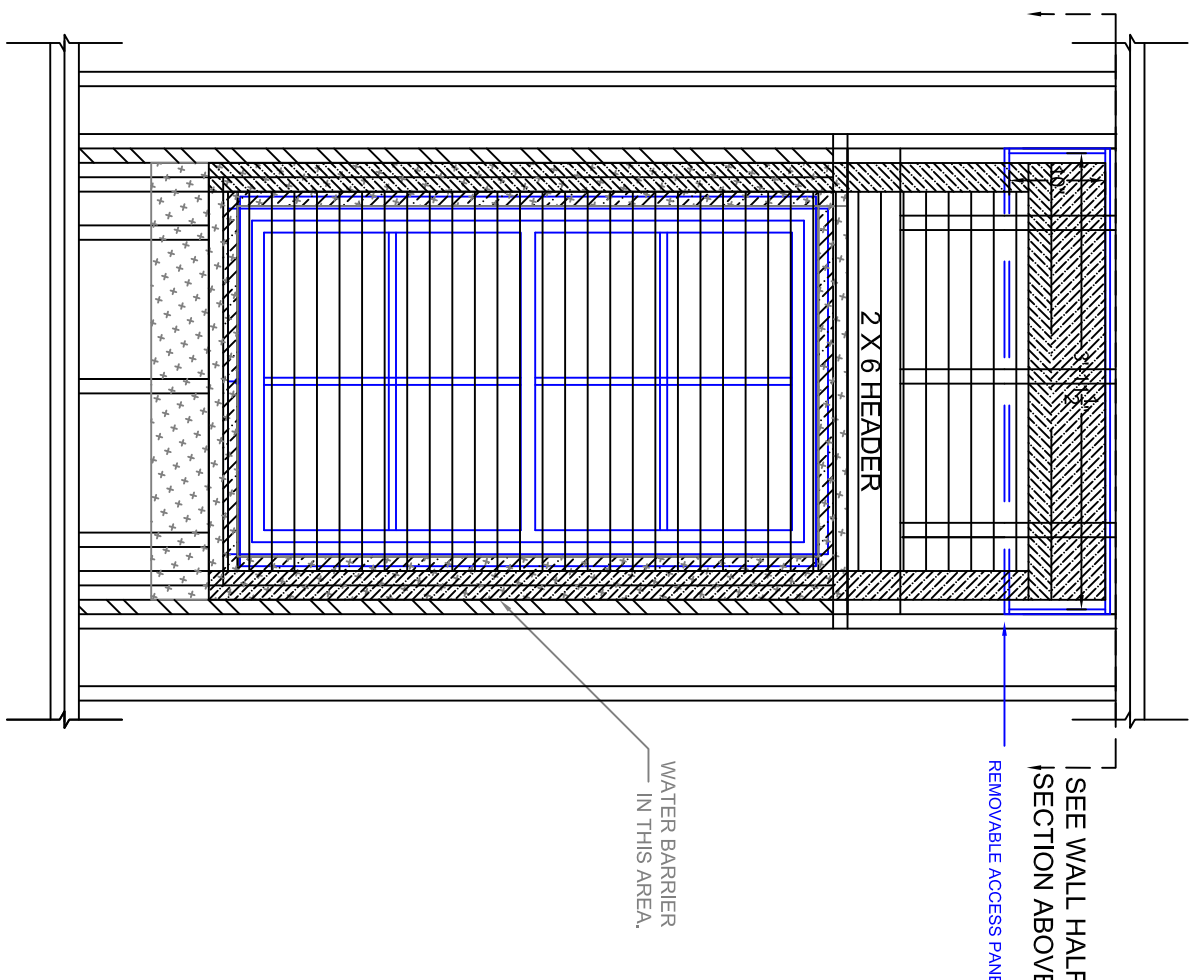
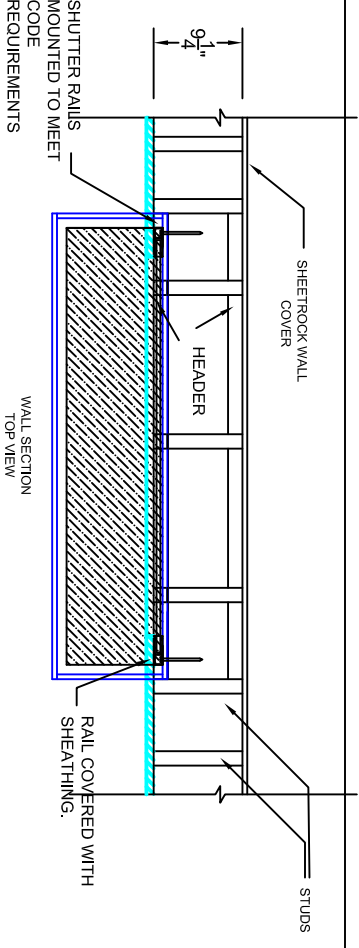
5331 W. Orange St.
Pearland, Tx. 77581
Tel: 281-485-0839
www.rollac.com



ATTACH 30 50 WINDOW WITH NAIL FIN'S TO BUCK AFTER FLASHING



TYPICAL DETAIL FOR 30-50 WINDOW IN 2X6 FRAMING WITH SOFFIT MOUNTED SHUTTER

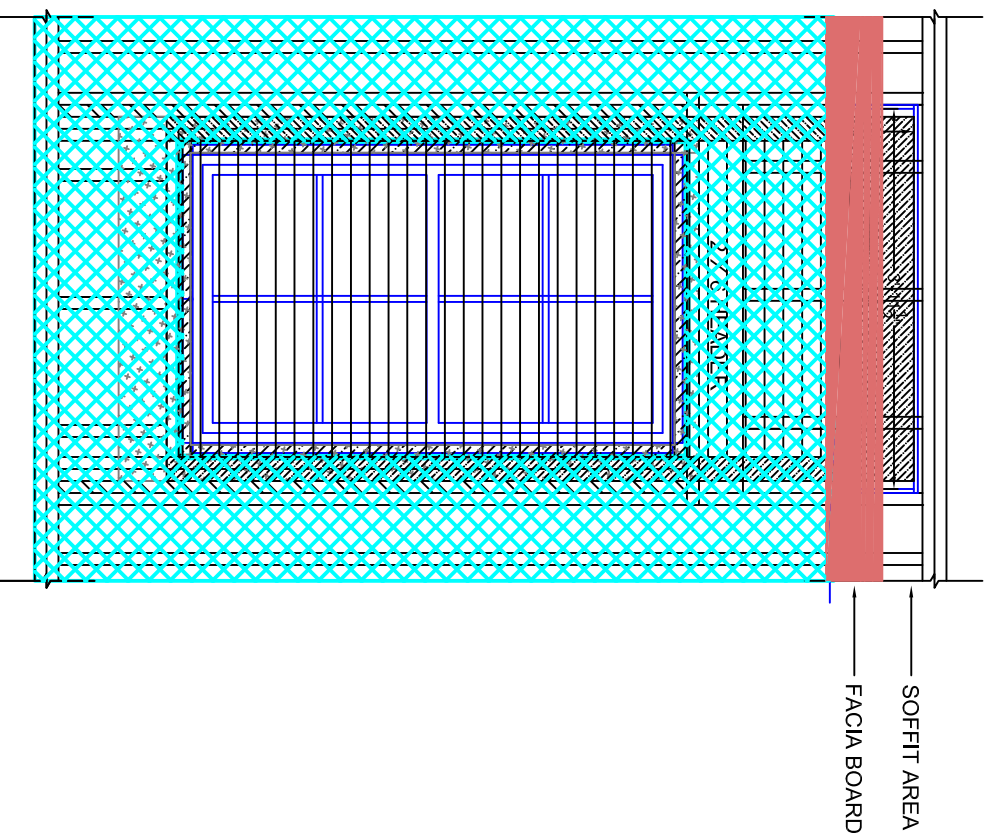


ATTACH ROLLAC ROLLING SHUTTER ACCORDING TO ROLLAC SPECIFICATIONS AND CODE COMPLIANCE.

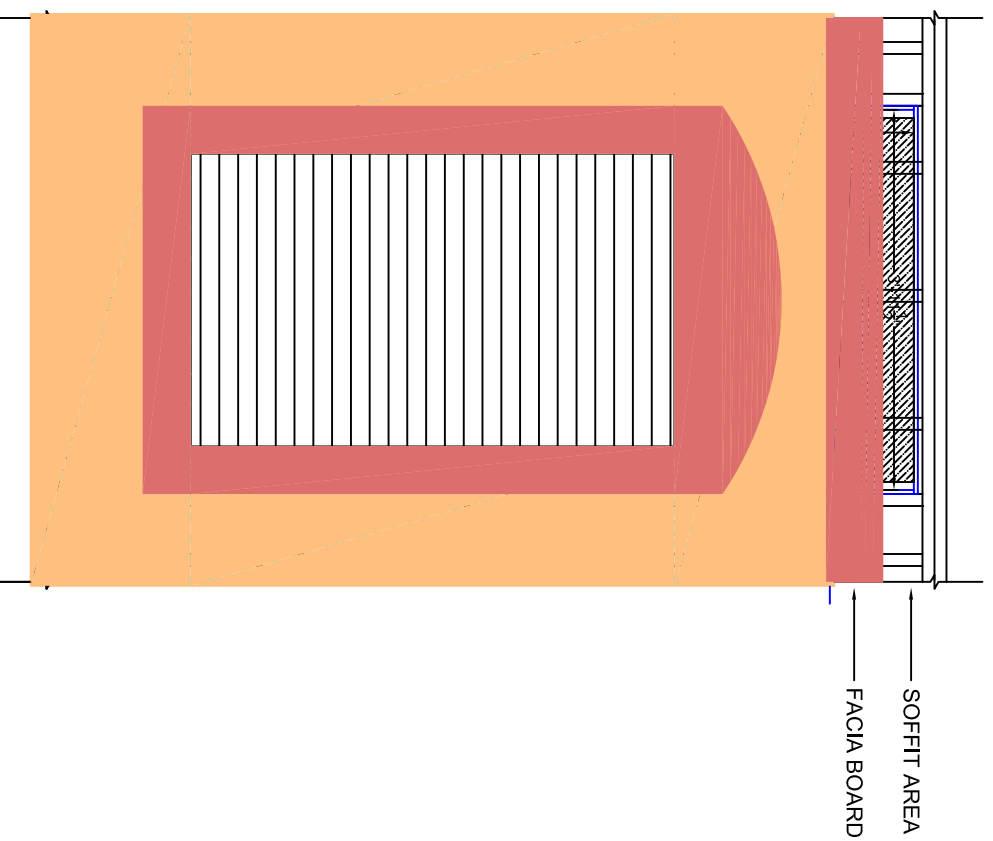
SOFFIT MOUNTED SHUTTER



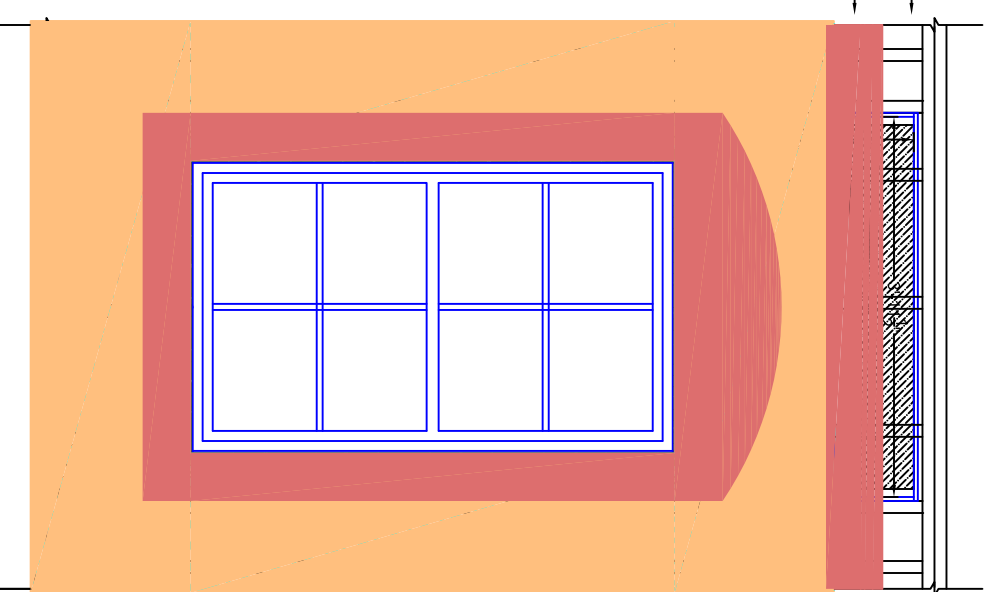
5331 W. Orange St.
 Pearland, Tx. 77581
 Tel: 281-485-0839
 www.rollac.com



WALL SHEATHING TO COVER RAILS OF SHUTTER AND TO MATCH WITH INSIDE WINDOW TRIM. SEE FRAMING DETAIL.



STUCCO OR OTHER WALL TREATMENT WITH TRIM SHUTTER CLOSED.



STUCCO OR OTHER WALL TREATMENT WITH TRIM SHUTTER OPEN AND NOT VISIBLE FROM EXTERIOR.

SOFFIT MOUNTED SHUTTER

PAGE 3



5331 W. Orange St.
 Pearland, Tx. 77581
 Tel: 281-485-0839
 www.rollac.com